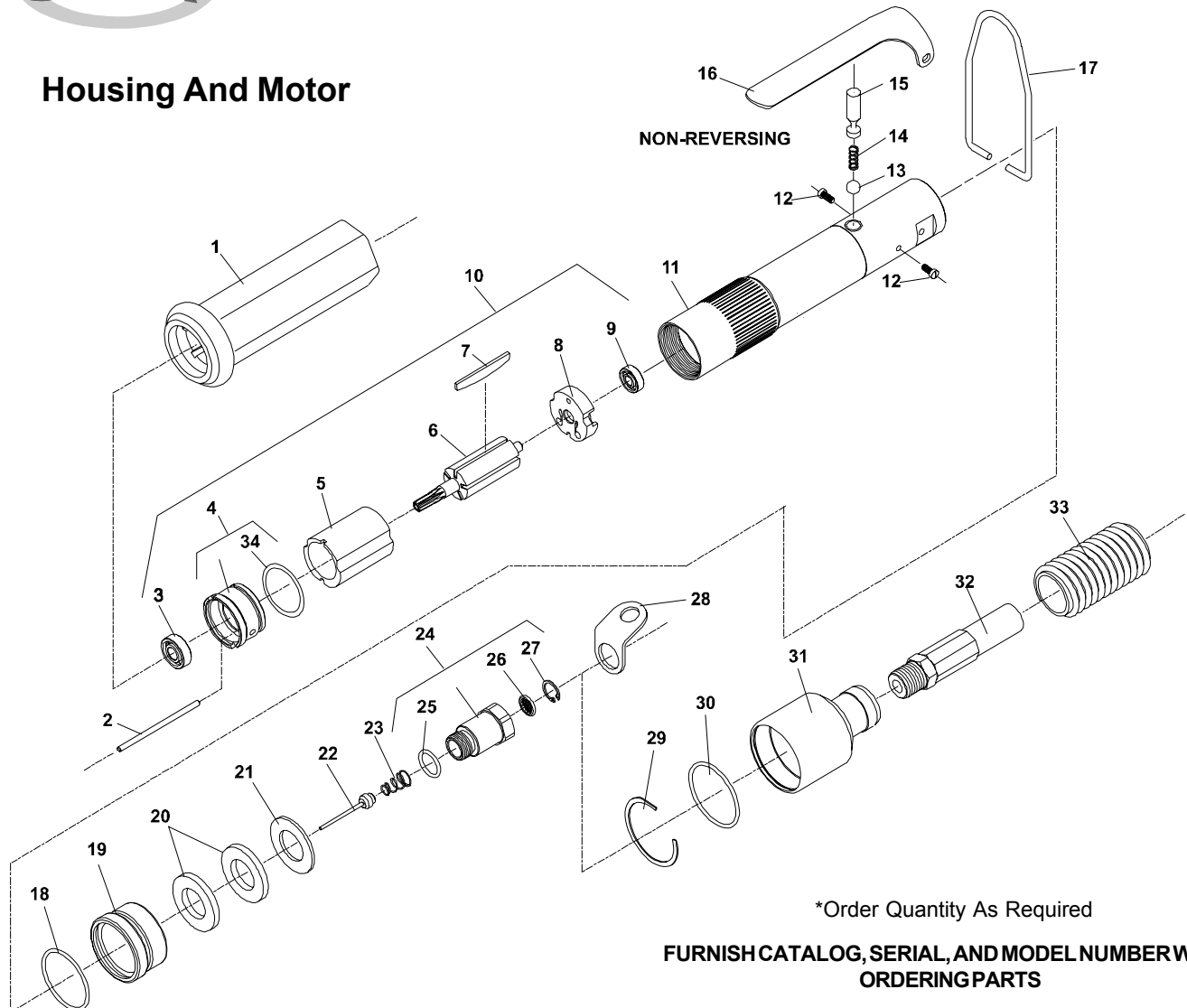




PARTS LIST FOR NO. 1 SERIES "1AM" AIRCRAFT ANGLE TOOLS

Form Z302A
Date 1-99/A
Page 1 of 4

Housing And Motor



*Order Quantity As Required

FURNISH CATALOG, SERIAL, AND MODEL NUMBER WHEN
ORDERING PARTS

Fig. No.	Part No.	Description
1.	66193	Sleeve—Housing
2.	66132	Pin
3.	65998	Bearing—Ball
4.	65995	End Plate—Lower
5.	65994	Cylinder
6.	65991	Rotor (6 Tooth)(2200 RPM)
	65992	Rotor (8 Tooth)(2800 RPM)
7.	66190	Vane (Set of 5)
8.	65997	End Plate—Upper
9.	10255	Bearing—Ball
10.	65999	Ass'y—Motor (6 Tooth)(2200 RPM)
	66000	Ass'y—Motor (8 Tooth)(2800 RPM)
11.	66219	Ass'y—Housing (Non-Reversing) (2200, 2800 RPM)
12.	06099	Screw (2)*
13.	10299	Ball—Steel 1/4" Dia.

Fig. No.	Part No.	Description
14.	21211	Spring—Lock Plunger
15.	66020	Plunger
16.	35235	Lever
17.	66036	Bail
18.	04210	Ring—"O"
19.	66018	Housing—Silencer
20.	66191	Washer—Felt (2)*
21.	66017	Screen—Diffuser
22.	66035	Ass'y—Valve
23.	21441	Spring
24.	66016	Adapter—Inlet
25.	14312	Ring—"O"
26.	30463	Screen
27.	21541	Ring—Retaining
28.	35196	Bail
29.	66034	Ring—Retaining
30.	14371	Ring—"O"
31.	66033	Adapter—Exhaust
32.	1359	Hose—Air
33.	65723	Hose—Exhaust
34.	14391	Ring—"O"

Remote Exhaust

**SIoux™
TOOLS INC.**

2901 FLOYD BOULEVARD ■ PO BOX 507 ■ SIOUX CITY, IOWA 51102-0507 USA ■

Printed In U.S.A.

Single Reduction (2200, 2800 RPM)

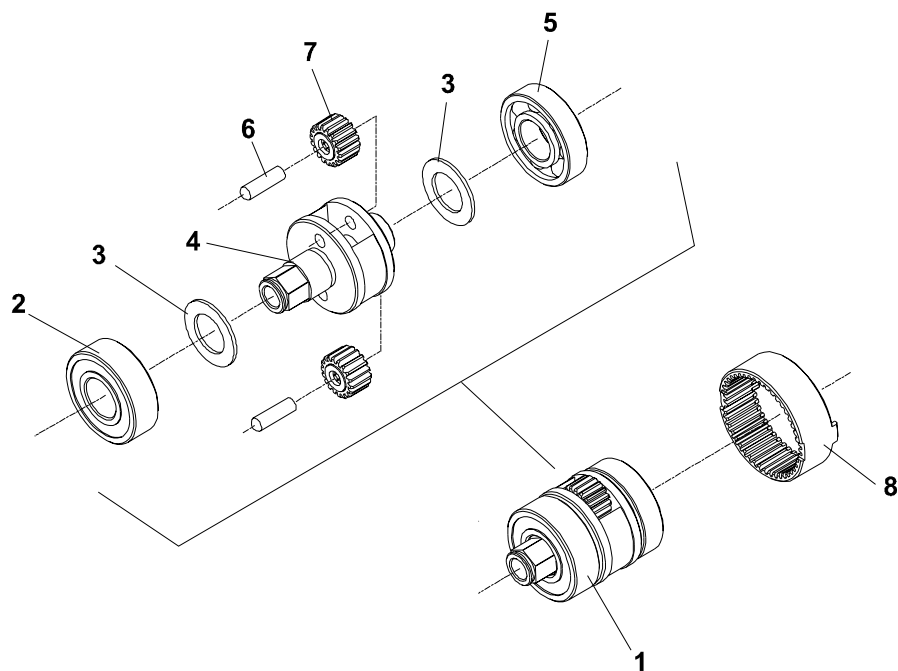


Fig. No.	Part No.	Description
1.	43803	Ass'y—Planetary (2200 RPM)
	43804	Ass'y—Planetary (2800 RPM)
2.	10257	Bearing—Ball
3.	25680	Washer (2)*
4.	44920	Carrier—Gear (2200 RPM)
	44921	Carrier—Gear (2800 RPM)
5.	10241	Bearing—Ball
6.	30453	Pin (2)*
7.	19212	Gear—Idler (2200RPM)
	19195	Gear—Idler (2800RPM)
8.	19189	Gear—Ring

*Order Quantity As Required

**FURNISH CATALOG, SERIAL, AND MODEL NUMBER WHEN
ORDERING PARTS**

45 Degree Angle Head Assembly

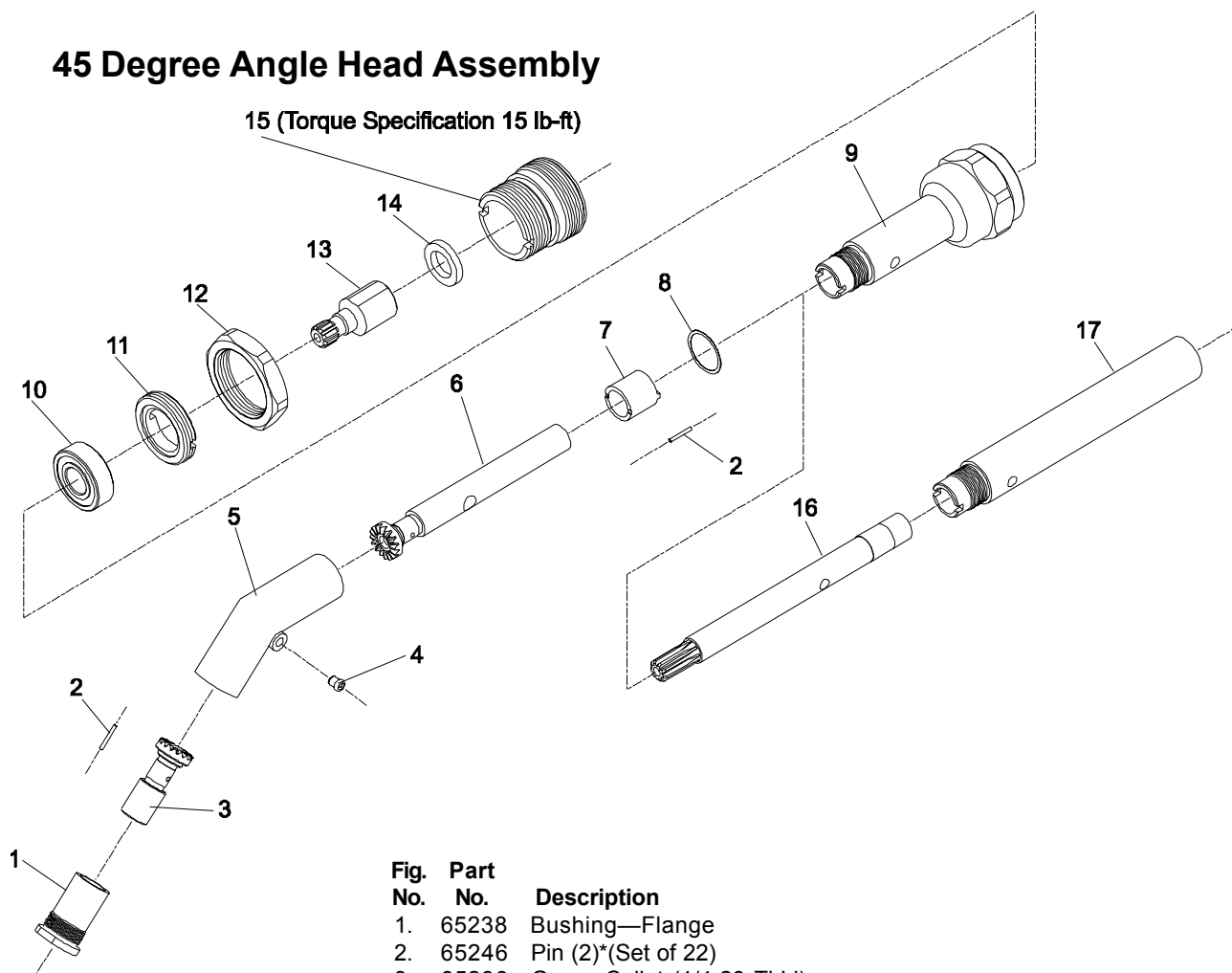


Fig. No.	Part No.	Description
1.	65238	Bushing—Flange
2.	65246	Pin (2)*(Set of 22)
3.	65236	Gear—Collet (1/4-28 Th'd)
	65264	Gear—Collet (#10-32 Th'd)
	65538	Gear—Collet (9/32"-40 Th'd)
4.	30375	Fitting—Grease
5.	65237	Housing—45 Degree (Includes Fig. 4)
6.	65235	Pinion
7.	65245	Retainer—Bearing
8.	65242	Shim—.005" (Order Quantity As Needed)
9.	65244	Housing—Angle Drill
10.	10257	Bearing—Ball
11.	65243	Nut—Retaining
12.	65143	Nut—Jam
13.	65146	Adapter—Spindle
14.	44122	Spacer
15.	65231	Adapter
16.	65486	Extension—Drive Shaft
17.	65487	Extension—Housing
	65213	Assembly—Complete (1/4"-28 Th'd) (Includes Figs. 1 thru 11)
	65265	Assembly—Complete (#10-32 Th'd) (Includes Figs. 1 thru 11)
	65541	Assembly—Complete (9/32"-40 Th'd) (Includes Figs. 1 thru 11)

*Order Quantity As Required

**FURNISH CATALOG, SERIAL, AND MODEL NUMBER WHEN
ORDERING PARTS**



90 Degree Angle Head Assembly

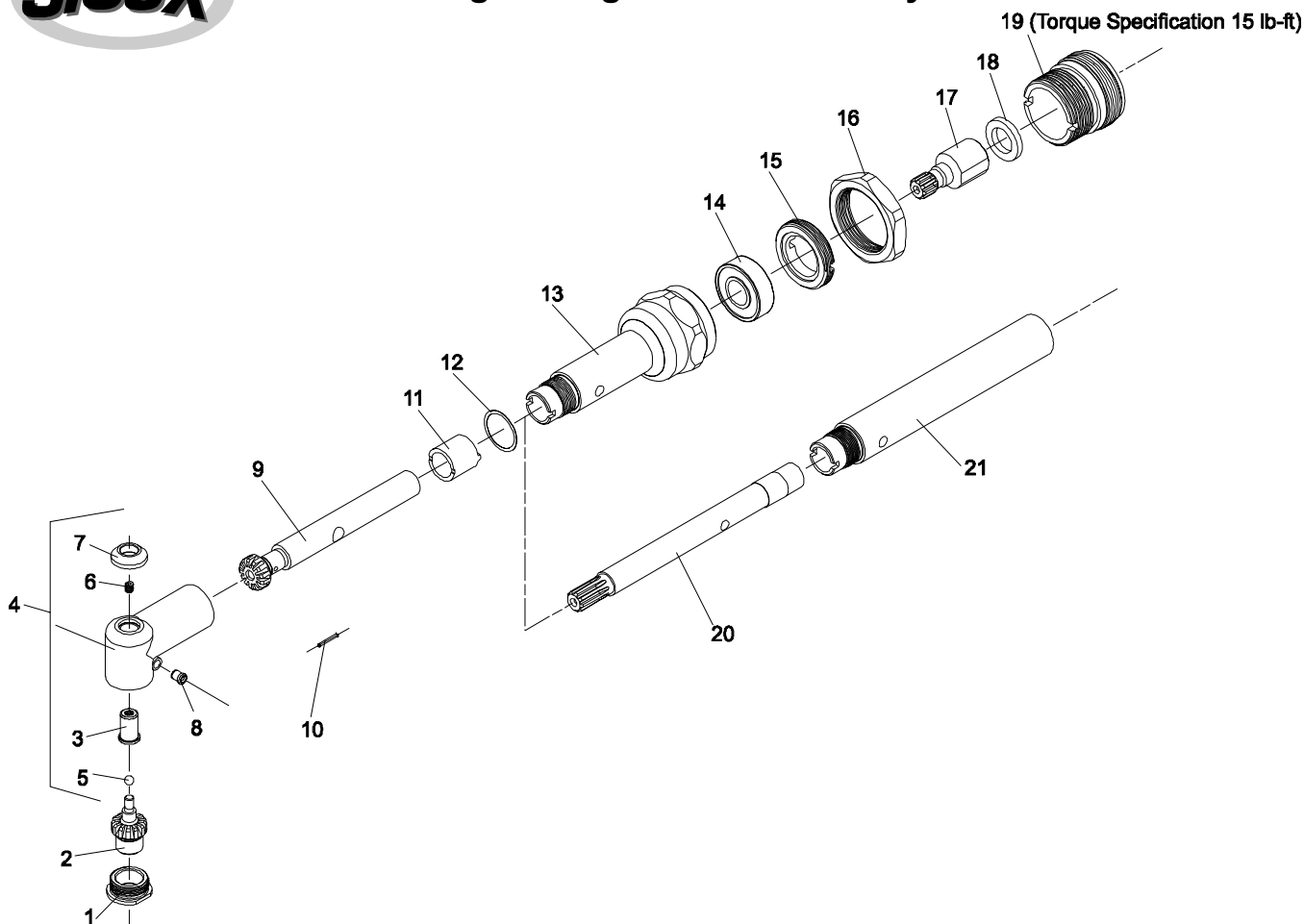


Fig. Part

No.	No.	Description
1.	65248	Bushing—Bearing
2.	67495A	Gear—Set (1/4"-28 Th'd) (Includes Figure 3, 5, 6, 7, 9)
	67496A	Gear—Set (#10-32 Th'd) (Includes Figure 3, 5, 6, 7, 9)
	67497A	Gear—Set (9/32"-40 Th'd) (Includes Figure 3, 5, 6, 7, 9)
3.	67852	Bushing (Includes Figures 5, 6)
4.	65247A	Housing—90°
5.	10303	Ball—Steel Ø1/8"
6.	06012	Screw—Set #4-40 x 1/8" Socket Hex
7.	67853	Cap
8.	30375	Fitting—Grease
9.		Pinion—90° (Not Available Individually, Refer to Figure 2)
10.	65246	Pin (Set of 22)
11.	65245	Retainer—Bearing

Fig. Part

No.	No.	Description
12.	65242	Shim—.005" (Order Quantity As Needed)
13.	65244	Housing—Angle Drill
14.	10257	Bearing—Ball
15.	65243	Nut—Retaining
16.	65143	Nut—Jam
17.	65146	Adapter—Spindle
18.	44122	Spacer
19.	65231	Adapter
20.	65486	Extension—Drive Shaft
21.	65487	Extension—Housing
	65214A	Assembly—Complete (1/4-28 Th'd) (Includes Figures 1 thru 15)
	65266A	Assembly—Complete (#10-32 Th'd) (Includes Figures 1 thru 15)
	65542A	Assembly—Complete (9/32"-40 Th'd) (Includes Figures 1 thru 15)

*Order Quantity As Required

FURNISH CATALOG, SERIAL, AND MODEL NUMBER WHEN
ORDERING PARTS

SIoux™
TOOLS INC.

2901 FLOYD BOULEVARD ■ PO BOX 507 ■ SIOUX CITY, IOWA 51102-0507 USA ■

Printed In U.S.A.